

■ BPA Solutions

Regulatory Compliance Simplified.



Dr. Boris Lutz - CEO & Founder
boris.lutz@bpa-solutions.net
<http://BPA.Solutions>

Tagesordnung

1 Unsere Geschichte

2 Kundenreferenzen

3 Wieso BPA?

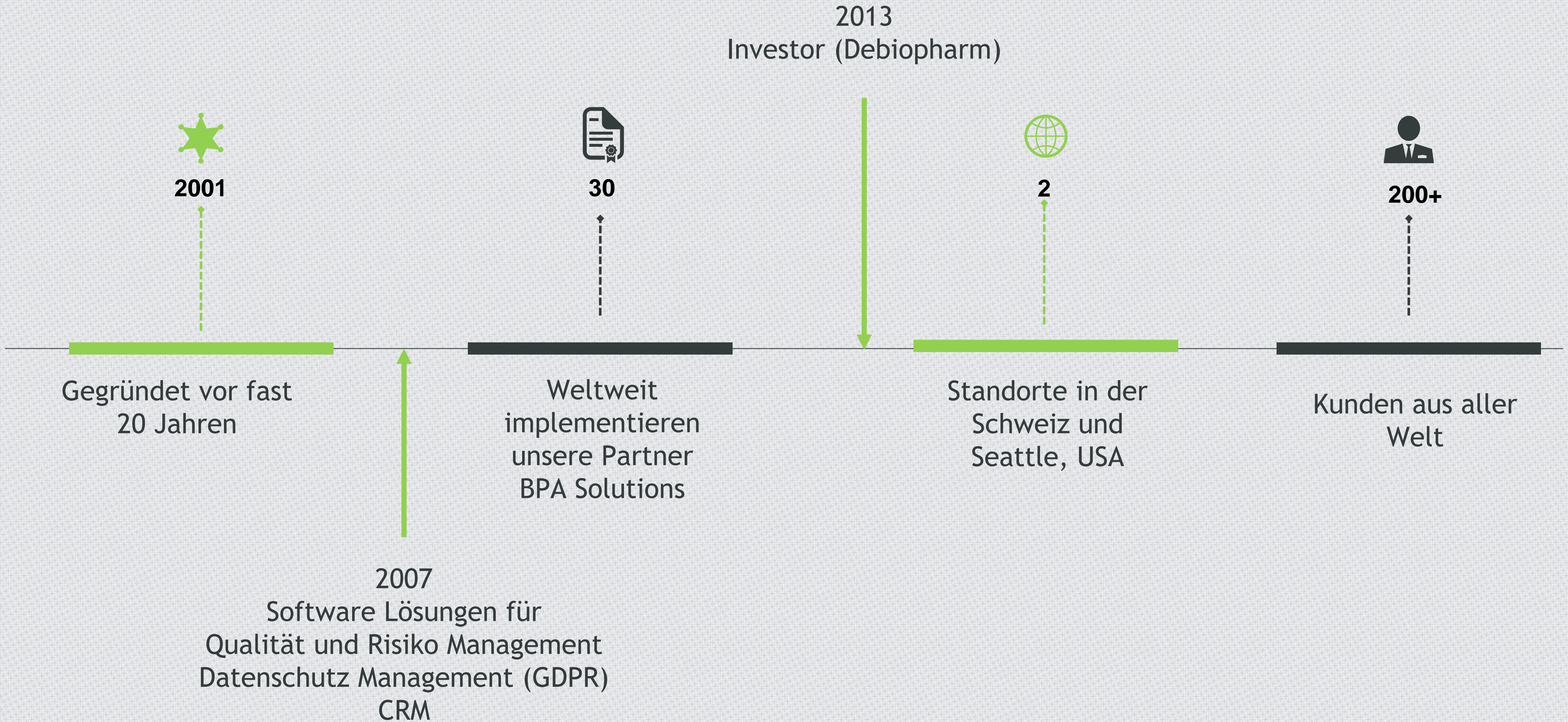
4 Qualitätsmanagement & die digitale Revolution

5 SharePoint als kollaborative Technologie

6 Künstliche Intelligenz & Innovation

7 Swiss made Software

■ Unsere Geschichte



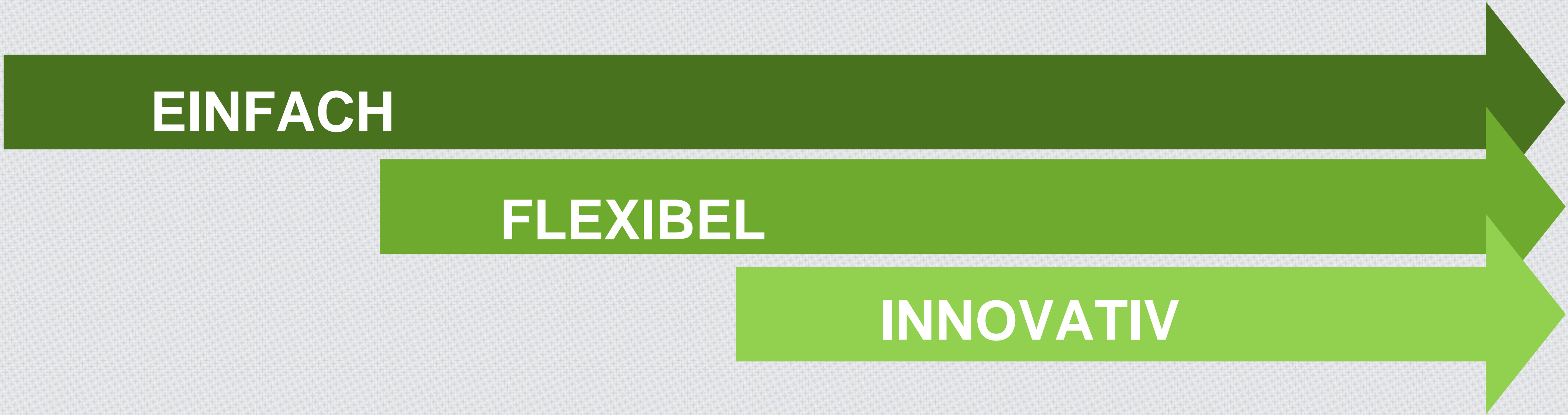
Kundenreferenzen

- Southwire (US), 2700 users, Manufacturing
- Komatsu Mining (US), 300 users, Mining
 - Burgess Pigment (US), Chemicals
 - Sakata (US), Agriculture
- New York Presbyterian Hospital (US), Hospital
 - Fulton County (US), Education
- Sunstar Engineering Americas (US), Chemicals

- European Chemical Agency (FI), Government
 - EDF (FR), 800+ users, Energy
- SECO (Swiss Confederation), Government
 - City of Lausanne (CH), Government
 - Ulysse Nardin (CH), Watchmaking
 - Securitas (BE), Services
 - TCR (BE), Services
- CFL Cargo (LU), Transportation
 - CIMO (CH), Chemicals
 - Losinger (CH), Construction

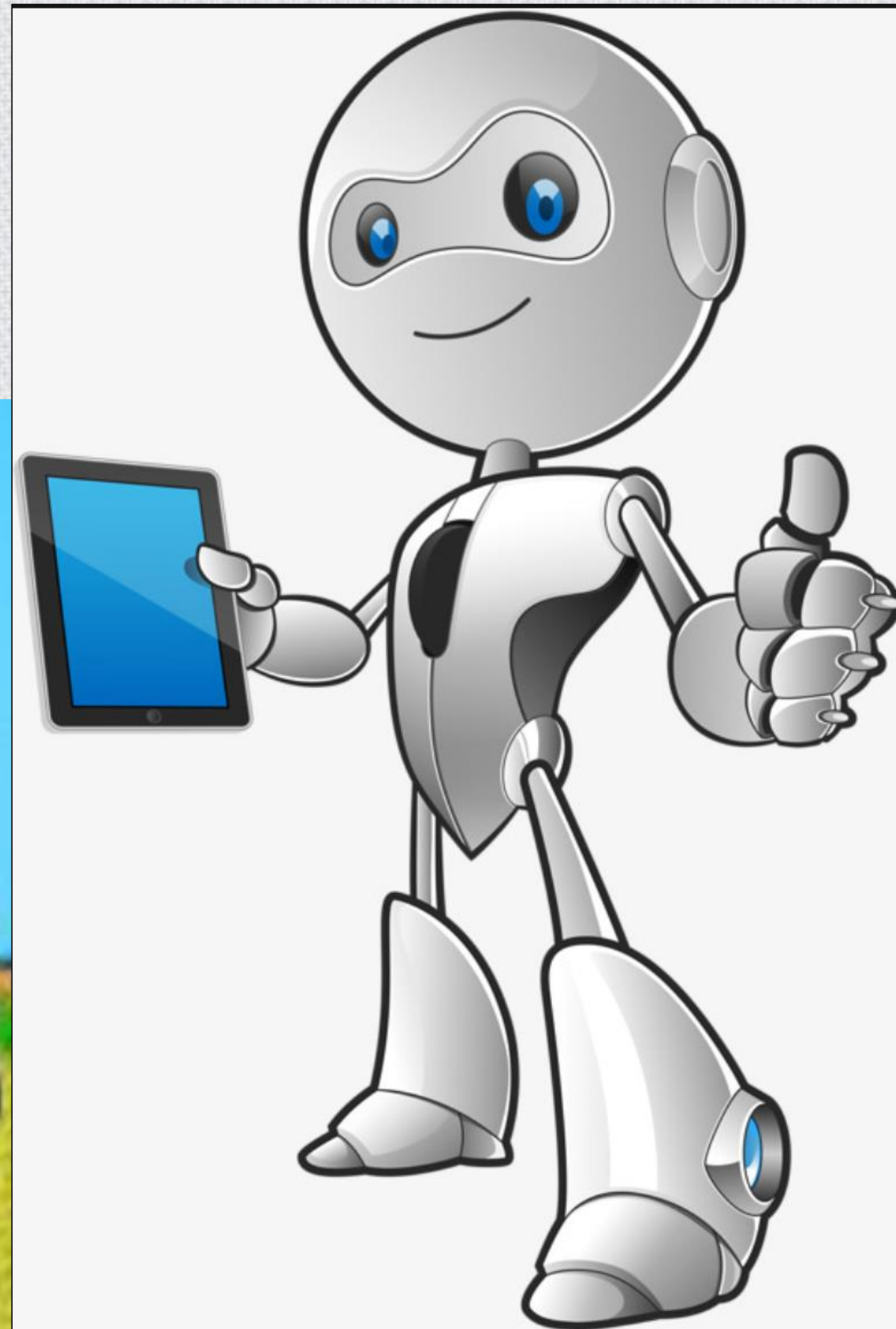
- Zuellig Pharma (Asia), up to 5000 users, Pharmaceuticals

■ **Wieso BPA?**



Qualitätsmanagement und die digitale Revolution

PDCA

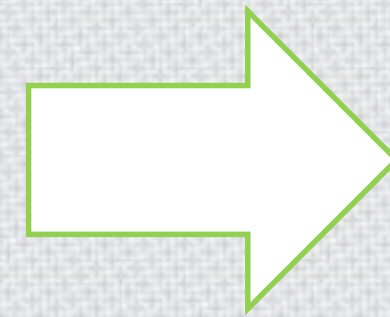
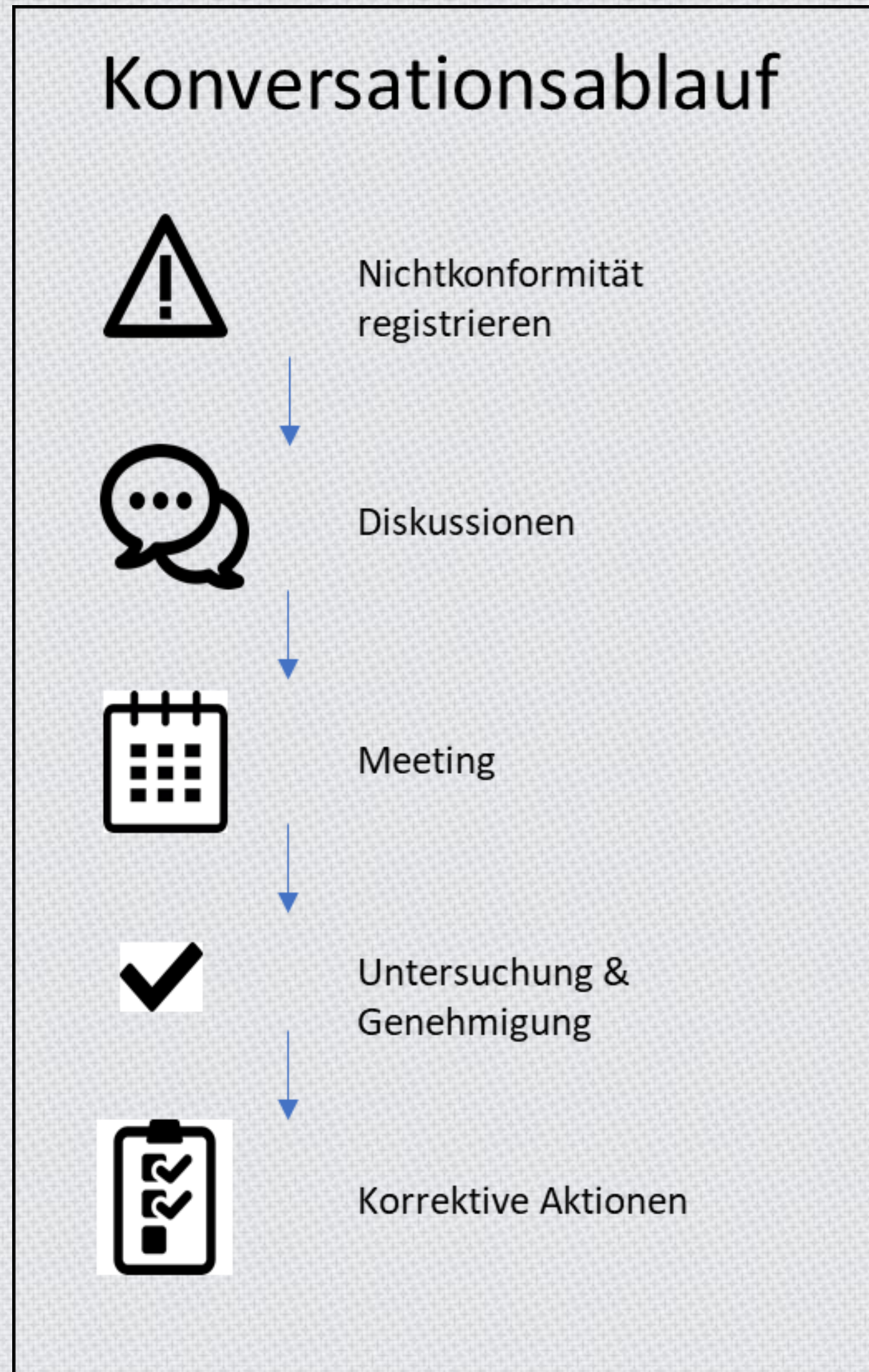


SharePoint als kollaborative Technologie



- Über **140M aktive Benutzer** (Oct. 2017)
- Mehr als **400,000 Organisationen** nutzen SharePoint, 70% im Cloud (May 2018)

Konversationsabläufe zur Problemlösung

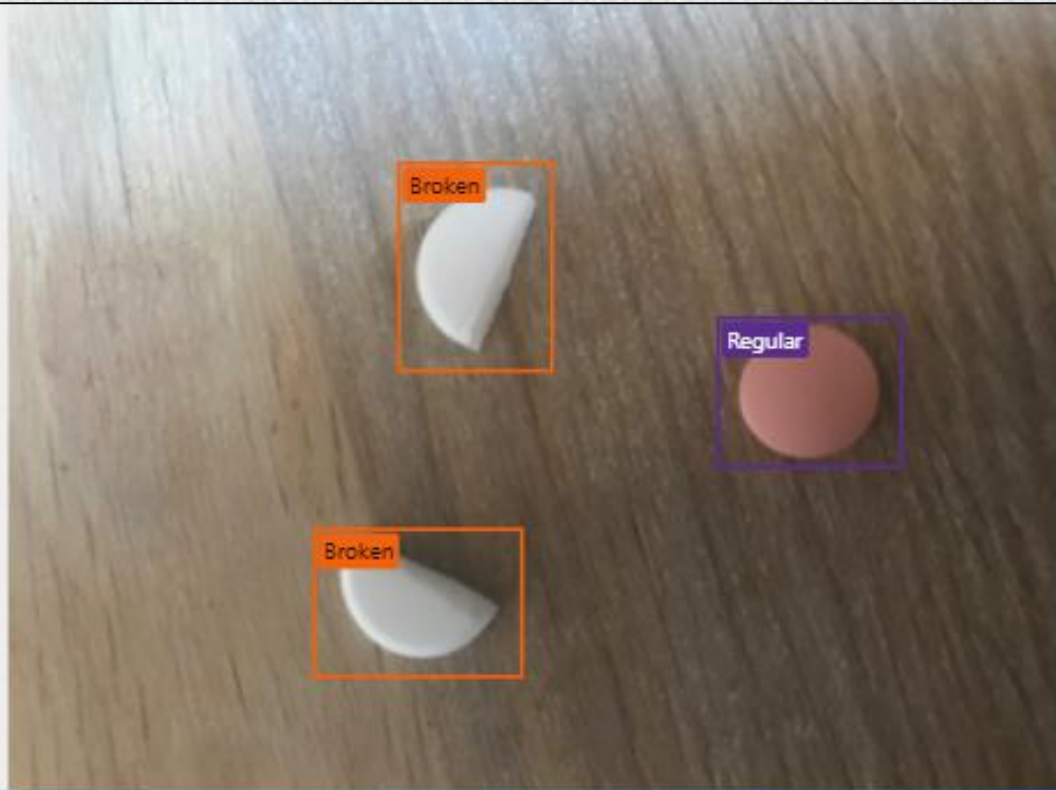


The screenshot shows a Microsoft Teams chat window for the "Quality Team Demo" group. The chat history includes:

- A message from **BPA** at 5/25 8:17 PM: "Non-Conformance approval - Parts damaged at delivery. Click **Approve/Reject** to process with this item approval." This message includes a category of "Customer complaint" and a description of "Parts damaged at delivery". It also contains an image of a cardboard box with "FRAGILE" tape.
- A reply from **Boris Lutz (Discovery)** at 5/25 8:21 PM: "Discovery 365, this is not the right box for these parts".
- A later message from **Boris Lutz (Discovery)** at 9/11 5:09 PM: "Belinda S. (Discovery) : what do you think?".

The interface includes navigation tabs (Conversations, Files, Wiki, Flow, Meeting Notes, NC Report), a search bar, and a bottom toolbar with icons for text, images, and video.

Künstliche Intelligenz für Objektdetektion & Texterkennung



Detect

Regular
1

Broken
2

Clear **Report NC**

Text

AMERICAN UNIVERSITY
WASHINGTON, DC

JOE STUDENT
INTERNATIONAL AFFAIRS
SCHOOL OF INTERNATIONAL SERVICE

4201 Massachusetts Ave NW
Apt. 1311
Washington, DC 20016

Tel: (240) 555-4997
Email: joestudent@gmail.com

Scan business card

* Last Name: STUDENT

First Name: JOE

Full Name: STUDENT JOE

Salutation: Find items

Type of Contact: Find items

Street 1:

Zip Code: 20016

City: Washington

State:

Country:

Account: Find items

Company: SCHOOL OF INTERNATION

Email Address: joestudent@gmail.com

Job Title:

Department:

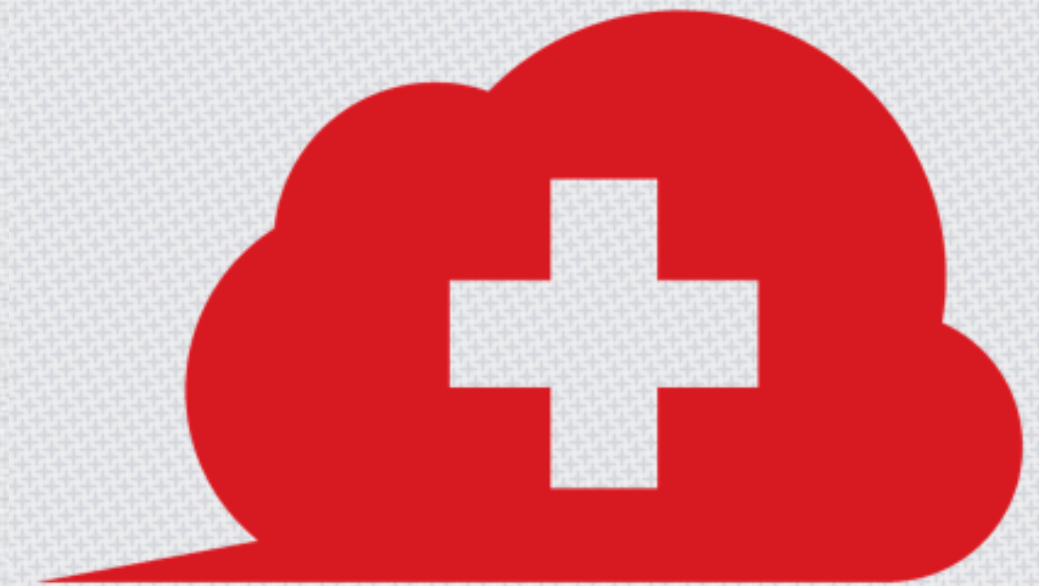
Business Phone: (240) 555-4997

Mobile Number:

Notes:

Submit in CRM **Clear**

Swiss made Software



 **DANKE !**

 **BPA Solutions**

Dr. Boris Lutz - CEO & Founder
boris.lutz@bpa-solutions.net
<http://BPA.Solutions>